

26 634

EUPHORIA® CUBE+

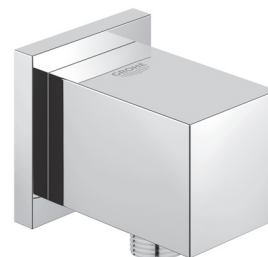
WALL UNION

Pure Freude
an Wasser



STANDARD SPECIFICATION:

- GROHE StarLight®
- 1/2" NPT threads
- Check valve included to prevent backflow



PRODUCT FEATURES:



GROHE StarLight®

CERTIFICATIONS:

- CALGreen Compliant
- Massachusetts Plumbing Board Approved
- Energy Policy Act of 1992
- CSA B125.1
- ASME A112.18.1

AVAILABLE FINISHES:

- | | | |
|-----------------|--|--------------------------------|
| 26634000 | | GROHE StarLight® Chrome |
| 26634A00 | | Hard Graphite |
| 26634EN0 | | Brushed Nickel InfinityFinish™ |
| 26634GN0 | | Brushed Cool Sunrise |

NOTE: Install this product according to the installation guide. ADA, CSA compliant when installed to the specific requirements of these regulations.

We reserve the right to make revisions without notice to product specifications. 07-06-2022

US
Tel: 1.630.582.7711 Fax: 1.630.582.7722
For the most current Specification Sheet,
go to www.grohe.us.

Canada
Tel: 1.888.644.7643 Fax: 1.905.366.2071
For the most current Specification Sheet,
go to www.grohe.ca.

PART OF **LIXIL**

26 634

EUPHORIA® CUBE+

WALL UNION

*Pure Freude
an Wasser*



TECHNICAL DATA:

Product Height	52 mm
Product Length	66 mm
Product Width	52 mm

